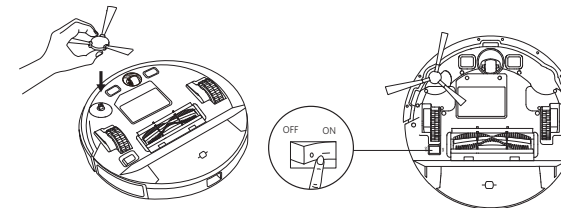


Quick Start Guide

Using Your RoboVac



For FAQs and more information, please visit:
www.eufylife.com



1

2

Remove the sticker next to the power switch, and the foam blocks beside the bumper before use.

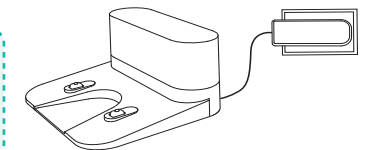


3

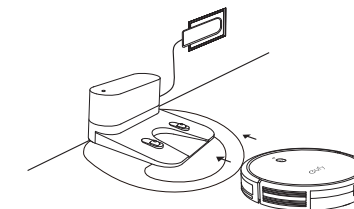
4

If you cannot remove the objects surrounding the Charging Base, check whether RoboVac can return without assistance; if not, contact eufy customer service for help.

- Always keep the Charging Base plugged in, otherwise RoboVac will not automatically return.
 - When the Charging Base is connected to AC power, the LED indicator on the Charging Base is SOLID WHITE.



5



6

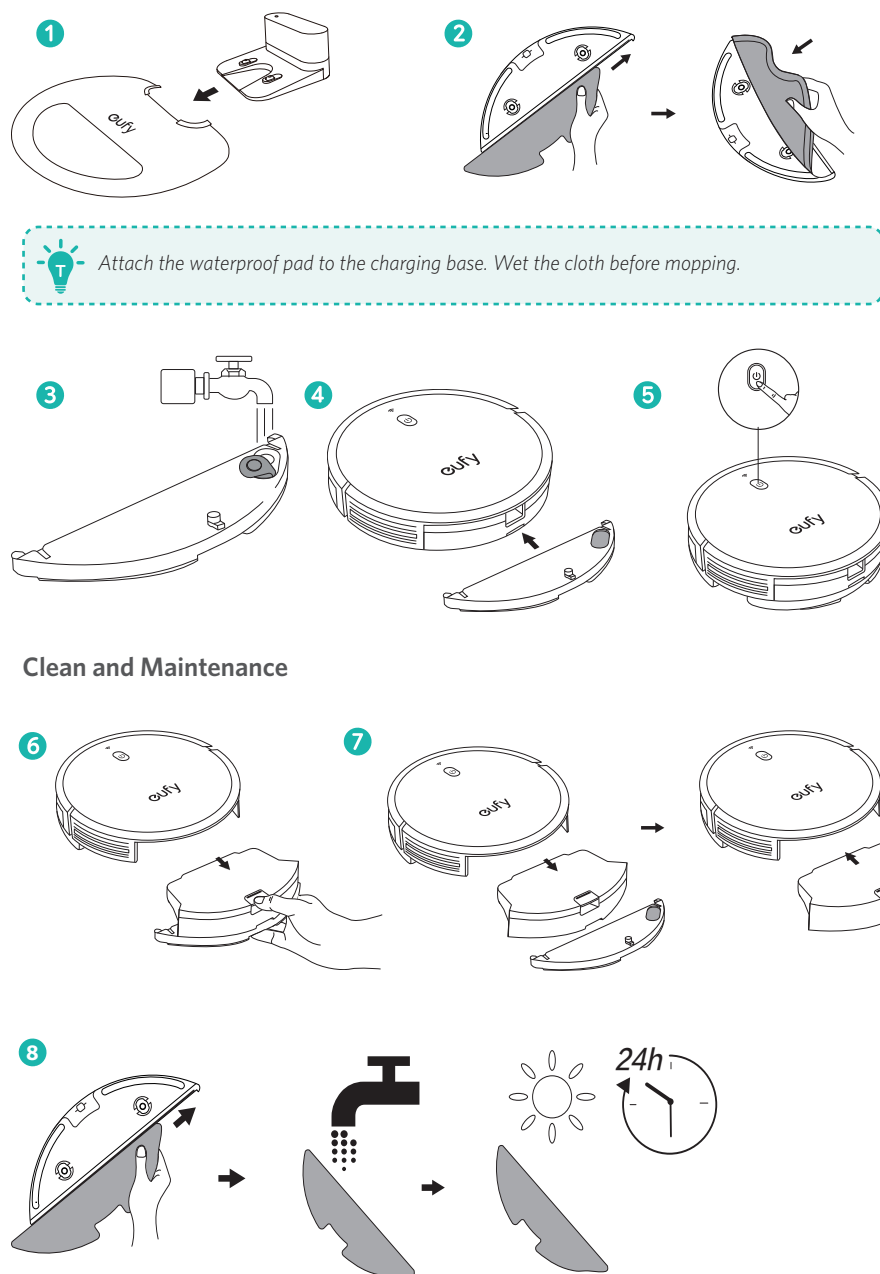
Fully charge RoboVac before use. The LED indicator on RoboVac pulses orange while charging, and is solid blue when fully charged.

Download the EufyHome app and follow the in-app instructions to complete the Wi-Fi connection. You then will be able to control RoboVac via this app. Refer to the Owner's Manual for details.

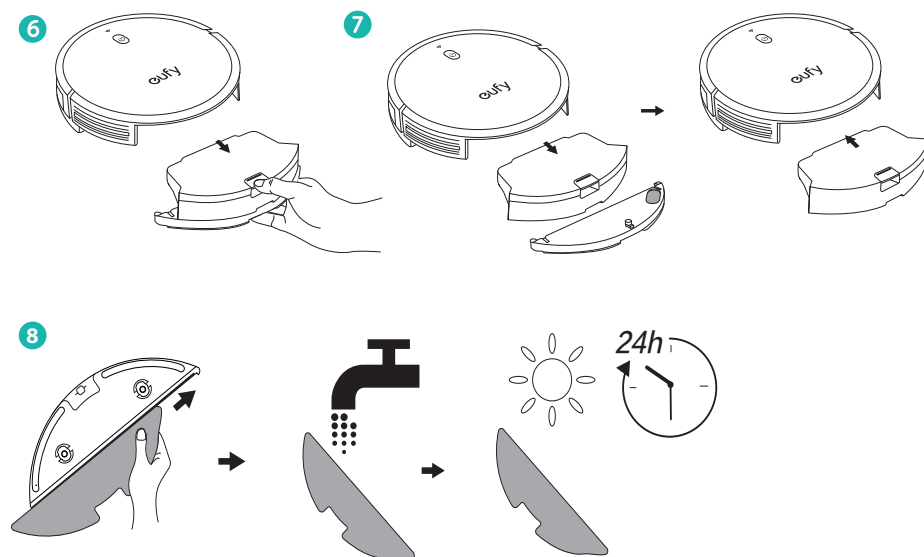


7

Using Mopping System

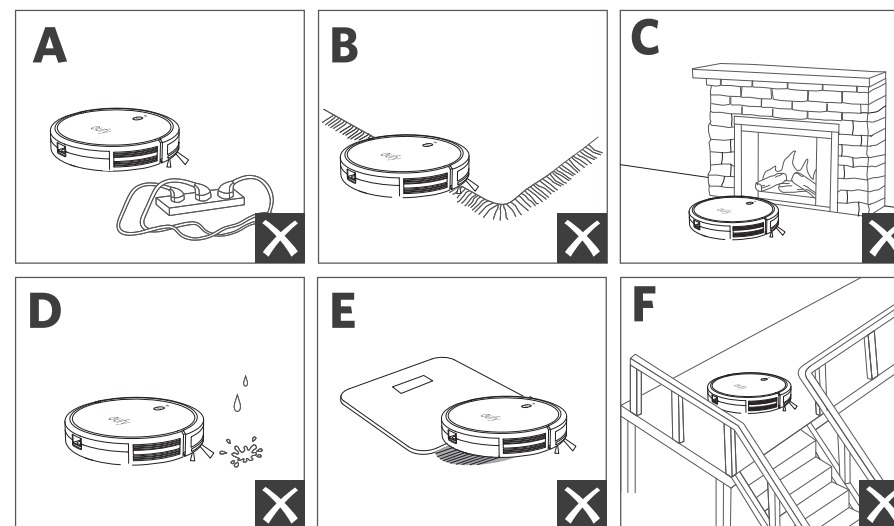


Clean and Maintenance



Important Tips

When using for the first time, follow RoboVac to observe and resolve any problems that may occur.



- A** Remove power cords and small objects from the floor that may entangle RoboVac. Use the supplied cable ties to organize your wires and power cords.
- B** Fold tasseled edges of area rugs underneath to prevent tangling RoboVac. Avoid cleaning very dark-colored high-pile rugs or rugs thicker than 1.02 in/26 mm as they may cause RoboVac to malfunction.
- C** It is strongly recommended to place boundary strips (sold separately) in front of fireplaces and certain areas (i.e. air vents) that may cause damage to RoboVac if entered.
- D** Keep RoboVac away from wet areas during cleaning.
- E** RoboVac may climb on top of objects less than 0.67 in/17 mm in height. Remove these objects if possible.
- F** Anti-drop sensors will prevent RoboVac from tumbling downstairs and steep drops in most cases. Sensors are less effective if dirty or used on carpeted/reflective/very dark-colored floors. It is recommended to place physical barriers to block off areas where RoboVac may fall.